

# HF-GENERATOR

## HF-2000 B

Order-No.: 670-91060



### Best Safety with Feedback-System

Powerful and stable technology can satisfy all surgical demands with safety flexibility and convenience without performance compromise.

### Smooth Cut

User can have smooth cut with minimum power needed and can choose from 4 different modes of monopolar cut settings.

### Coagulation

User can select contact or spray type coagulation which needed.

### Easy Autohand switch in Bipolar mode

For easy operation, it can control with hand and foot, both ways.

### Single Foot Switch

### Single Foot Switch (Bipolar)

Order-No.: 670-91052

### Double Foot Switch (Monopolar)

Order-No.: 670-91051

### Use In

- General surgery
- Dermatology
- Endoscopy
- Vascular Surgery
- Gynaecology
- Heart/Thoracic Surgery
- ORL/ENT
- Pediatric Surgery
- Orthopedics
- Urology
- Oral Surgery
- T.U.R.

### Features

#### ■ Most Compact and Lightest System

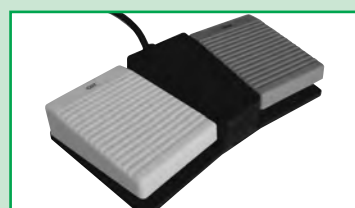
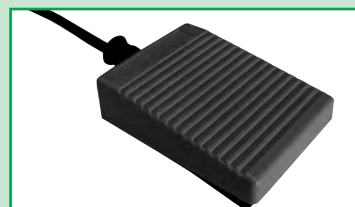
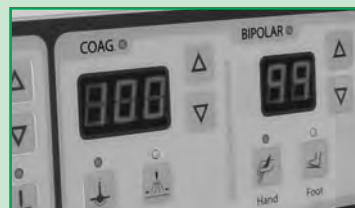
- It weights just 12.5 kg and can be mounted or placed in anywhere

#### ■ External Power Generator




- When the user specifies the power requirement, HF-4000 B is designed to provide consistent and reliable power. Our power source settings will benefit the user clinical user requirements and flexibility in operation.

#### ■ Super Liability and Durability

- All the products have been testing for durability under standard testing methods. With our knowledge of quality control, HF-4000-B will provide user with peace of mind during operation.
- In monopolar mode, urethral resection or laparoscope procedure can be done with ease. In bipolar mode, large areas or wet tissues can be treated with standards coagulations can be done with ease.
- Our device is designed to fully support the power requirement of an operator. Our power requirements were designed and configured for clinical user needs.



## GENERAL

Order-No.	
670-91060	HF-2000 B
670-91052	Foot Switch bipolar
670-91051	Foot Switch monopolar
Main Connection	
Power supply	230 V
Frequency	50/60 Hz
Classification	
Approval	CE
Dimension and Weight	
Dimension (w/h/d)	330 x 455 x 150 mm
Weight	12.5 kg
Operating Conditions	
Operating temperature	+10° C ~ +40° C
Operating humidity	30 % ~ 75 %
Extent of Delivery	
HF-2000 B	<ul style="list-style-type: none"> <li>■ Unit</li> <li>■ Main power cable</li> <li>■ User manual</li> </ul>
Interface	
Monopolar connection	
Bipolar connection	
Ground pad cable connection (GC2HF6)	

## SPECIFICATION

HF-Specification	
Pure Cut	200 W at 300 Ω
Blend 1	150 W at 300 Ω
Blend 2	120 W at 300 Ω
Blend 3	100 W at 300 Ω
Contact coagulation	100 W at 300 Ω
Spray coagulation	80 W at 300 Ω
Bipolar coagulation	80 W at 100 Ω

Order-No.	Standard Accessories
PR310P5	<ul style="list-style-type: none"> <li>■ Reusable ES pencil, pencil type: PR 310</li> <li>■ Electrode: standard Blade</li> <li>■ Cable length: 5 m</li> <li>■ Plug type: 3-prong plug</li> </ul>
EB22R2	<ul style="list-style-type: none"> <li>■ Reusable electrode, standard length</li> <li>■ Tip type: blade, insulation overmold</li> </ul>
EN22R2	<ul style="list-style-type: none"> <li>■ Reusable electrode, standard length</li> <li>■ Tip type: needle, insulation overmold</li> </ul>
ES22R3	<ul style="list-style-type: none"> <li>■ Reusable electrode, standard length</li> <li>■ Tip type: 3 mm ball, insulation overmold</li> </ul>
GB900	<ul style="list-style-type: none"> <li>■ Ground pad, bipolar</li> <li>■ Pad size: adults,</li> <li>■ Cable type: NA</li> <li>■ Plug: NA</li> </ul>
GC2HF6 (Ground pad cable connection)	■ Plug: Ø 6.3 mm plug
Bipolar forceps (See Promed catalogue)	■ Reusable bipolar forceps
FC813FS	<ul style="list-style-type: none"> <li>■ Reusable 5m Silicone cable</li> <li>■ 2 x 4 Banana plug</li> <li>■ Bipolar forceps flat connector</li> </ul>



MGB Endoskopische Geräte GmbH Berlin

Schwarzschildstrasse 6 · 12489 Berlin, Germany · Phone: +49-30-63 92-70 10/-7000 · Fax: +49-30-63 92-70 11  
E-mail: sales@mgb-berlin.de · Internet: www.mgb-berlin.de